



Dana Marie  
design co.

#1066 Up a Notch  
10 oz. Denim  
Varigated Topstitching  
Pattern Lengthened 10"



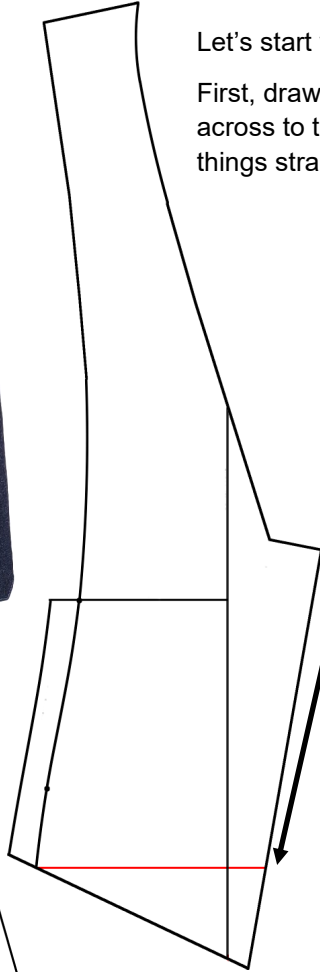
# #1066 UP A NOTCH

## MAKE IT LONGER!

We lengthened our sample by 10 inches. There are a few considerations to make, but it's relatively simple, even with an asymmetrical front.

Let's start with the Right Front, since that's the trickiest.

First, draw a horizontal line from the bottom of the pocket extension across to the front edge angle. Use the grainline on the pattern to keep things straight.

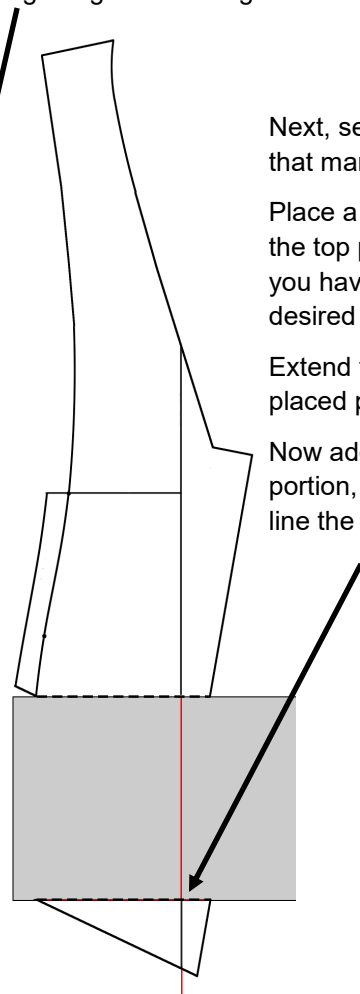


Next, separate the pieces on that marked line.

Place a piece of paper under the top portion, making sure you have enough for your desired length.

Extend the grainline through the placed paper.

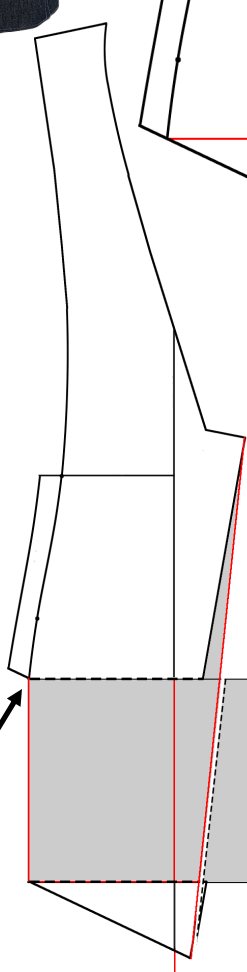
Now add back the lower cut portion, using the grainline to line the pieces up correctly.



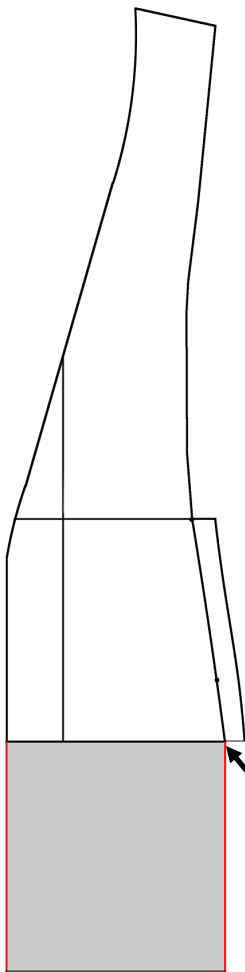
Finally, redraw a new front angle. Draw a line from the top of the angle to the bottom. You'll need to add more paper underneath this new line.

Trim away excess paper.

This is your new Right Front and Right Front Facing!



You may find you'll need to smooth out the area where you joined the extension so you don't end up with a bump in the seam line.



**Left Front and Facing.**

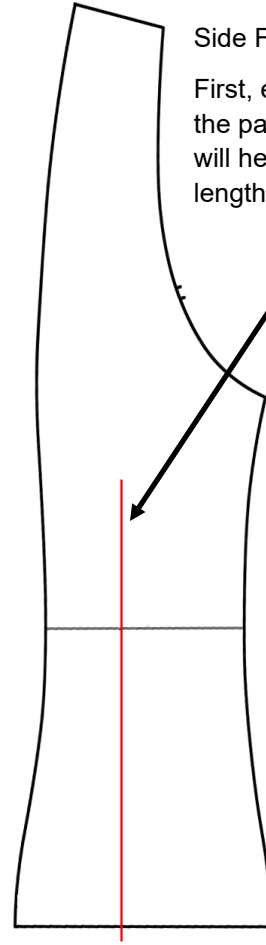
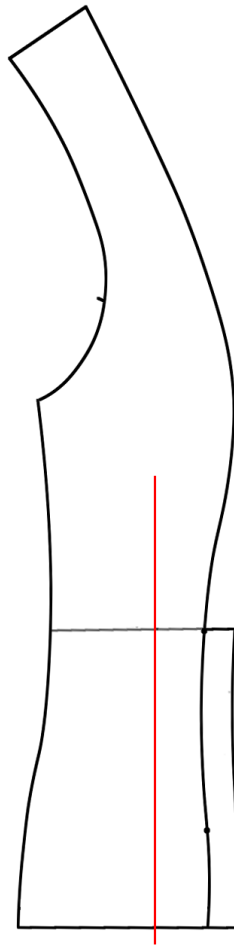
Place a piece of paper under the pattern piece, making sure you have enough for your desired length.

Extend the front and side edge through the placed paper. This should be perpendicular with the grainline.

Trim away excess paper.

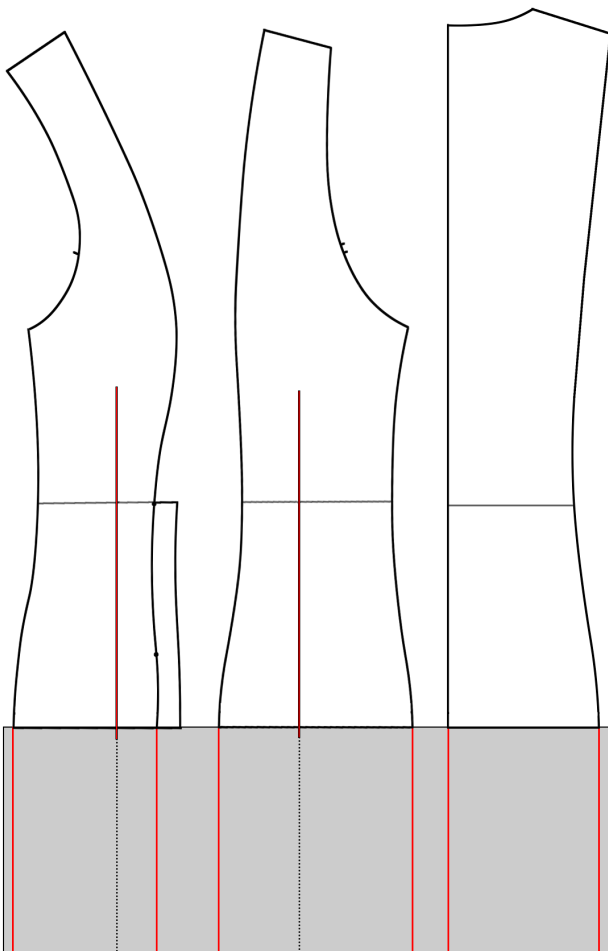
This is your new Left Front and Left Front Facing!

You may find you'll need to smooth out the area where you joined the extension so you don't end up with a bump in the seam line.



**Side Front and Side Back.**

First, extend the grainline on the pattern to the bottom. This will help ensure your lengthening stays straight.



Place a piece of paper under the pattern piece, making sure you have enough for your desired length.

Extend the cut lines through the placed paper. This should be perpendicular with the grainline.

Trim away excess paper.

This is your new Side Front, Side Back and Back pattern pieces.

Check the **lower facing pieces** to make sure they fit. You may need to smooth out the curved seam in the facings.

